



LIFELADDER
by port:safety

Traditional safety ladders...



Hard to find



Invisible at night



Difficult to use



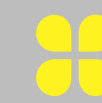
Dangerous



Out of reach



Require maintenance



LIFELADDER

by port:safety





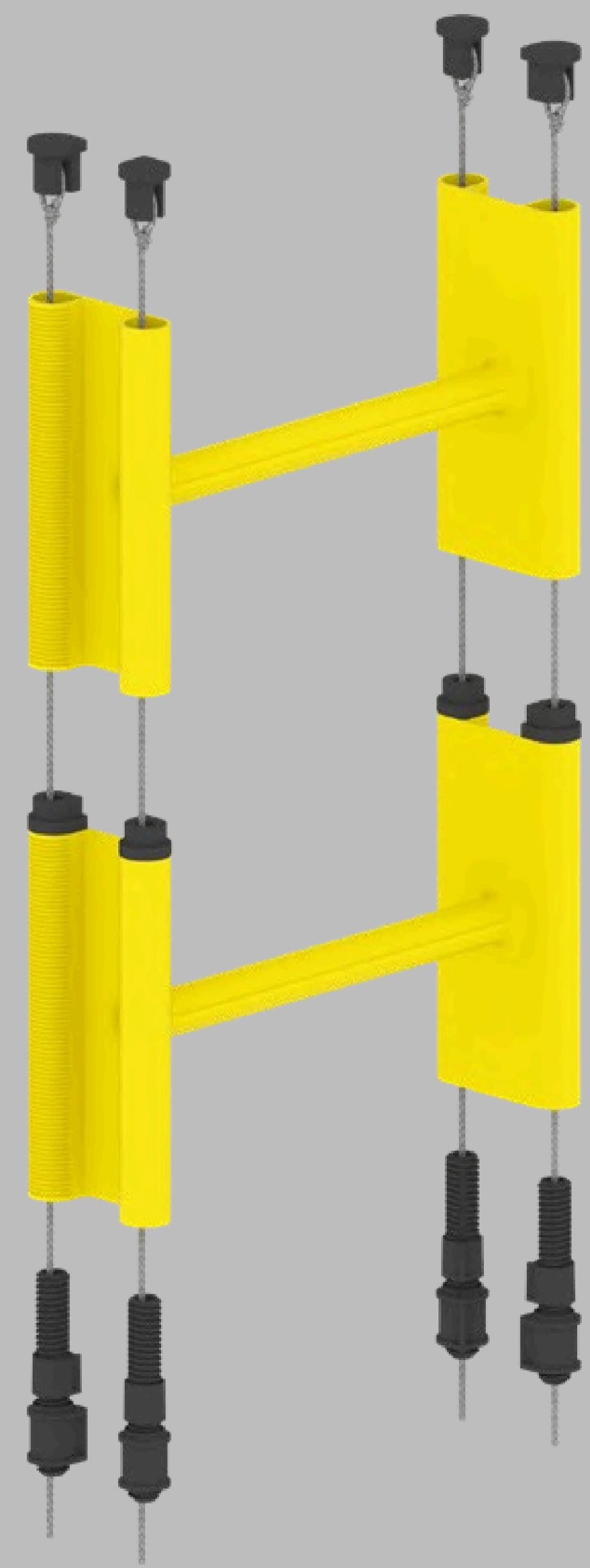
Visible 24/7

Modular construction

Maintenance free



Construction



Main modules

High strength

Spacers

Compressible

Ropes

Static, 2 ton each

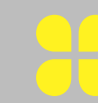
We were skeptical at first, but the product turned out to be very compelling
The LightUnit is a strong feature and the yellow color is amazing

Per Staal, Operations Manager

By & Havn is responsible for the Copenhagen Harbor's 42 km quay

The invention behind LifeLadder is covered by Patent no. EP17166906.2



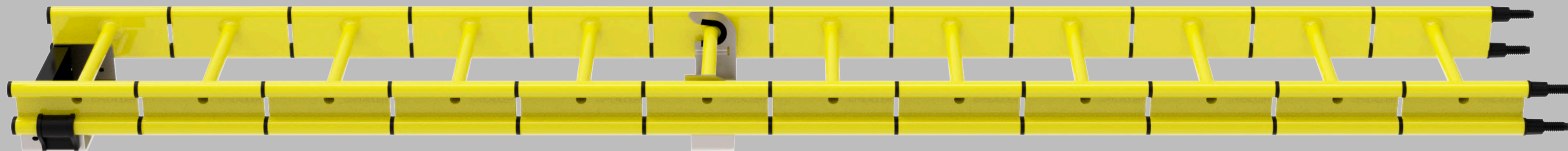


Specifications



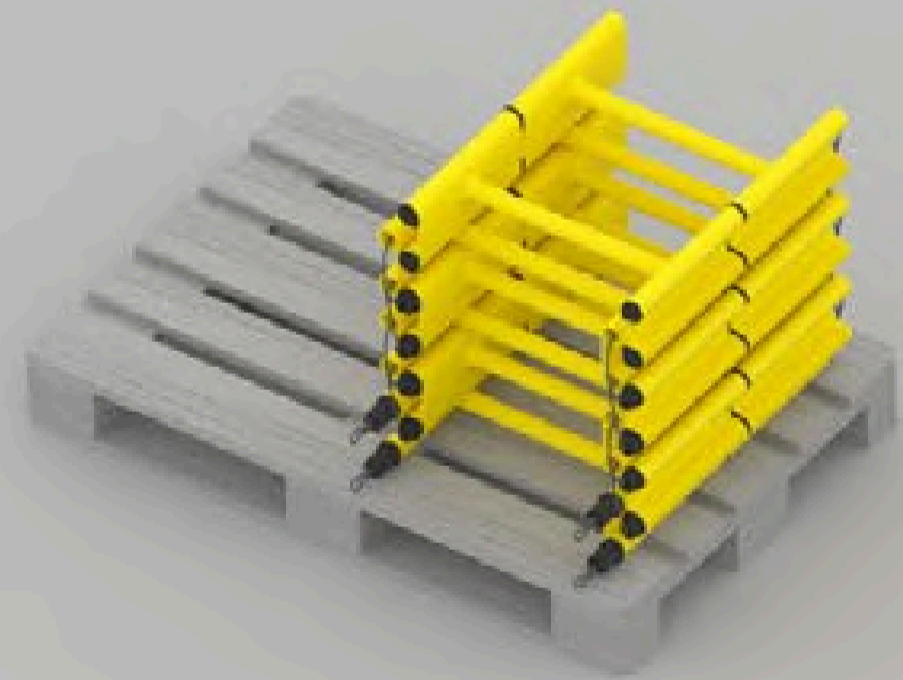
23.6 kg

3.6 meter ladder incl. steel brackets + LightUnit



LifeLadder is dimensioned to comply with European Standard EN 14329

Delivery



1.
Receive on pallet



2.
Fold out

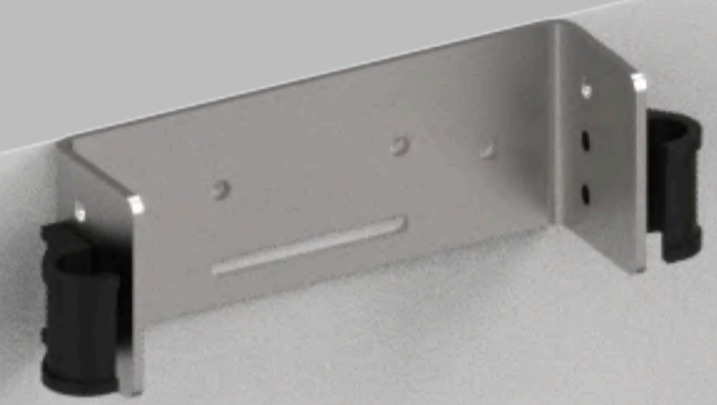


3.
Tighten



Installation

1.
Mount the brackets



max 2,5m

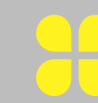


2.
Attach LifeLadder



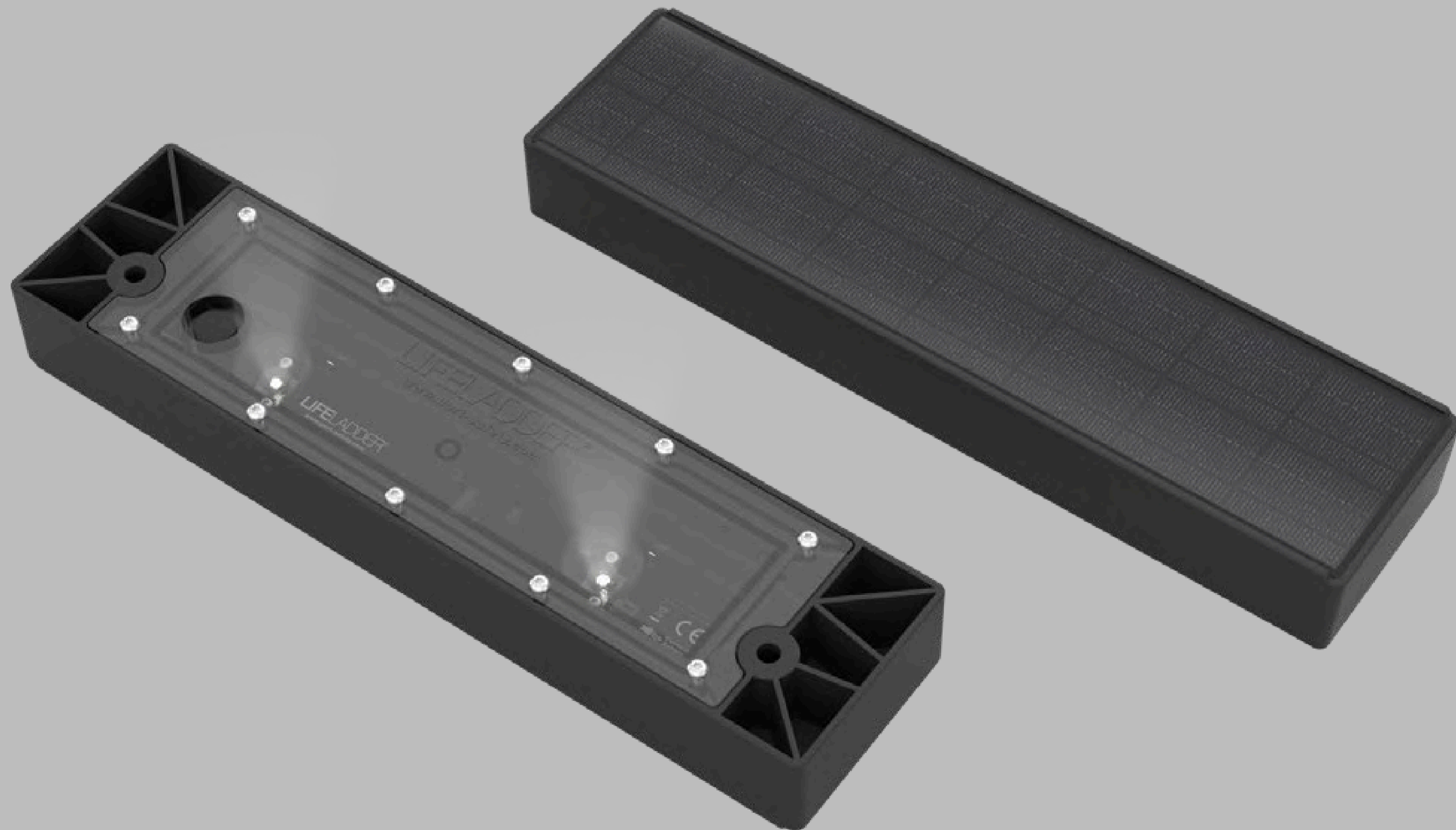
3.
Insert LightUnit

Suitable for manual handling
3.6 m LifeLadder weighs 16.1 kg



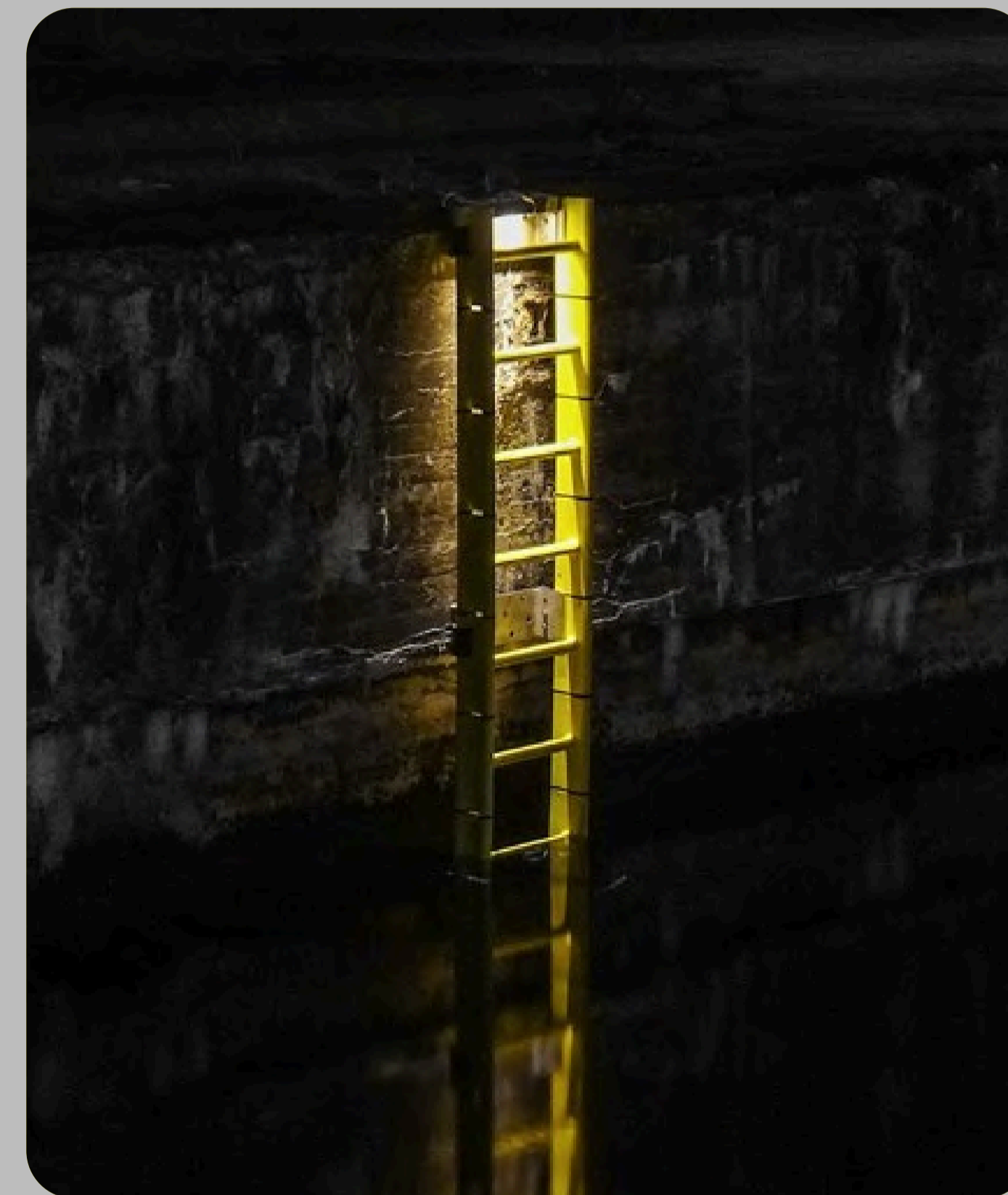
LightUnit

Add-on for the LifeLadder



Solar powered
Ensures 24/7 visibility
Independent of power grid

Robust materials
Reinforced PP
Waterproof IP68

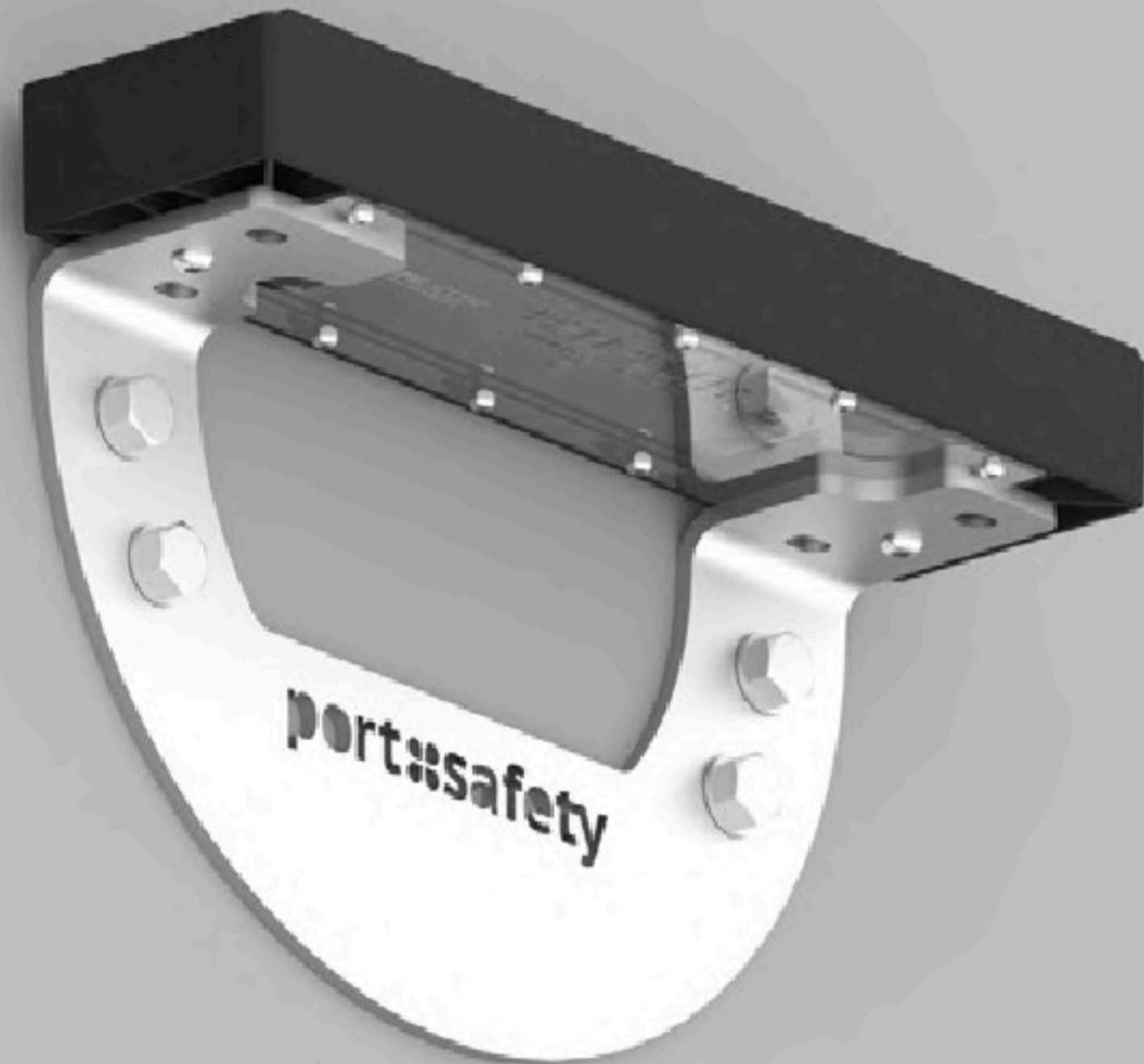


Functions all year
Optimized for full year performance
up to 60°N

LightUnit with Wallmount

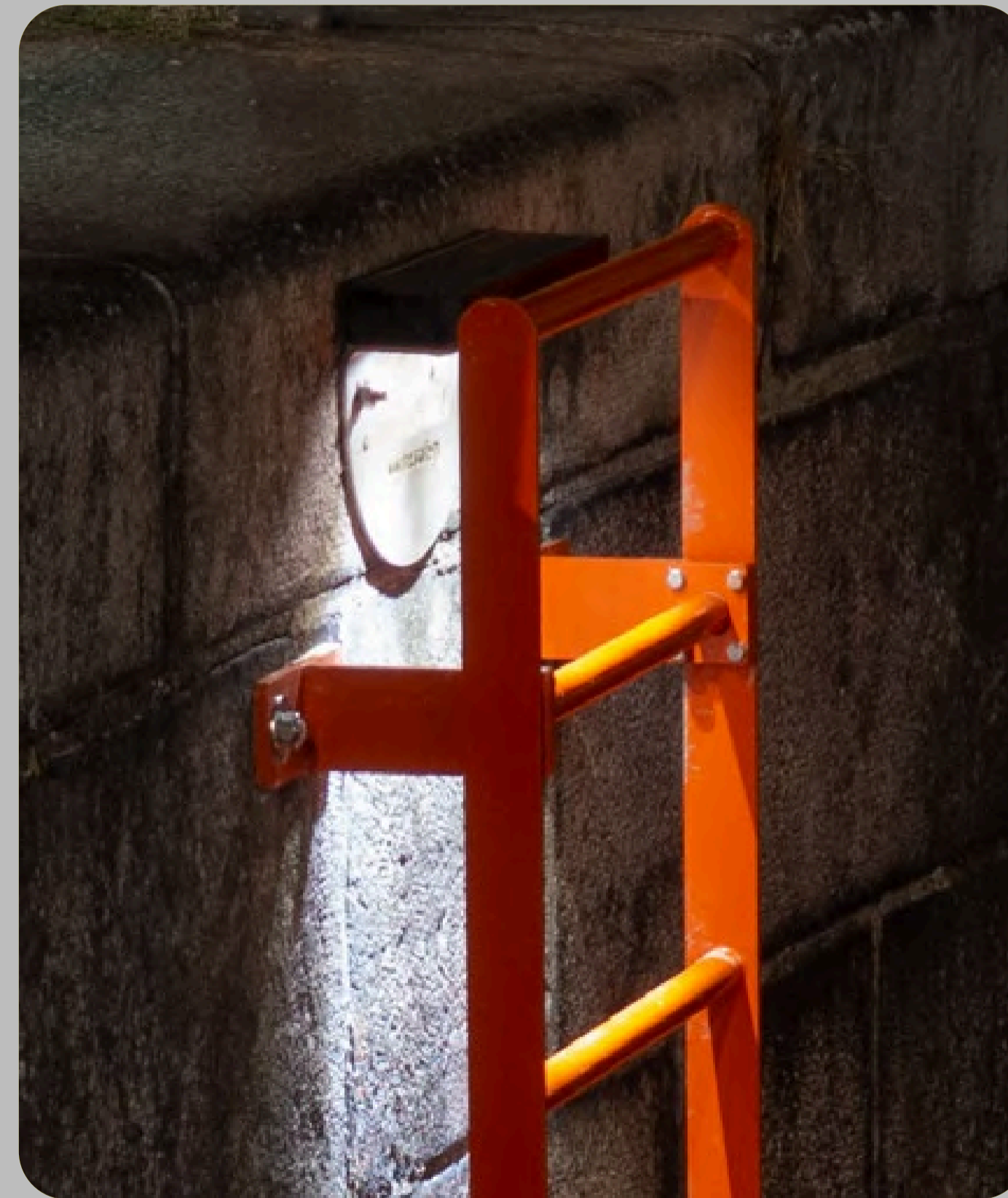


Safety upgrade for 3rd party ladders



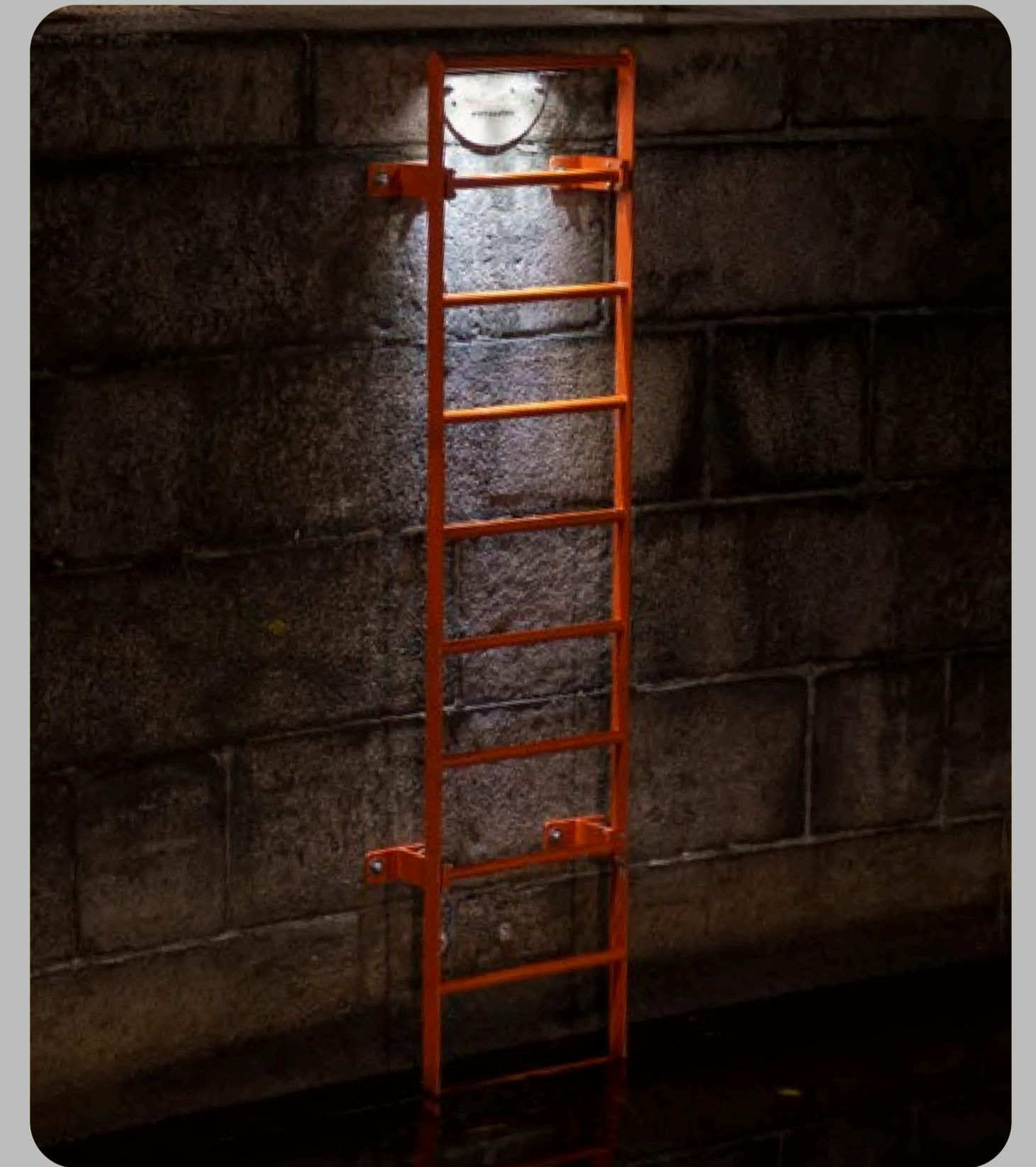
Versatile

Dimensioned to fit
any standard safety ladder



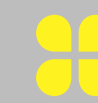
Simple addition = Major upgrade

Also for old fashioned orange
and grey ladders



Intuitive

Makes the ladder recognizable
to a person in distress



Mission

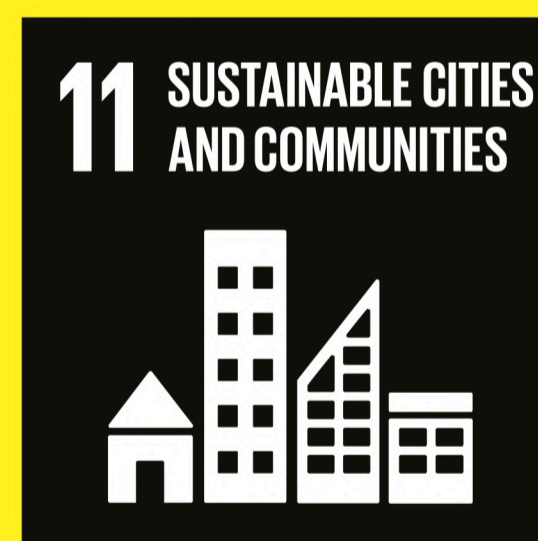
”We are in the business of saving lives”

Port-Safety supports the SDGs:

Combining known technologies to tie up less energy, produce less waste, and provide safer solutions



Fewer drowning accidents both in old and new city areas where people are close to the waterfronts



Reducing carbon footprint by 67% compared to conventional solutions*



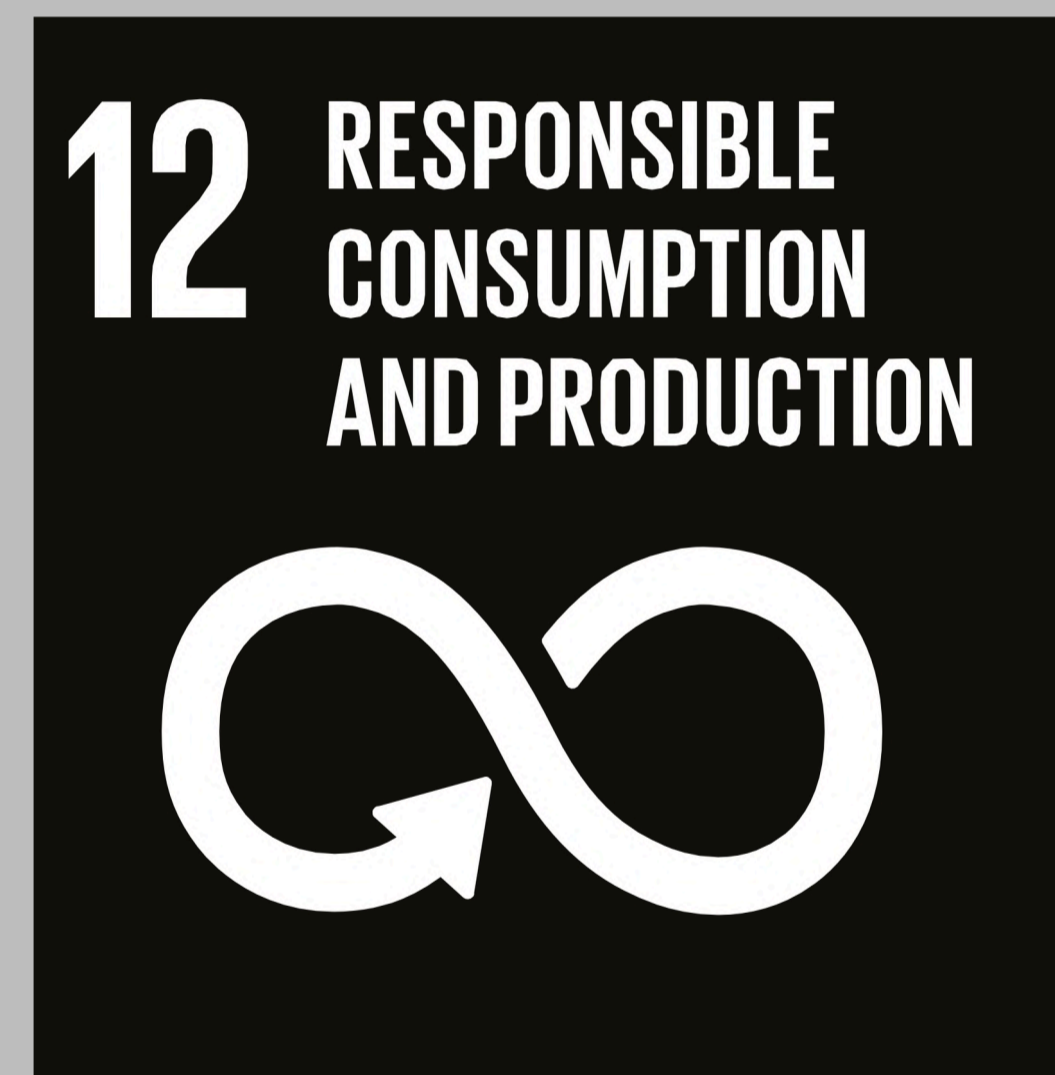
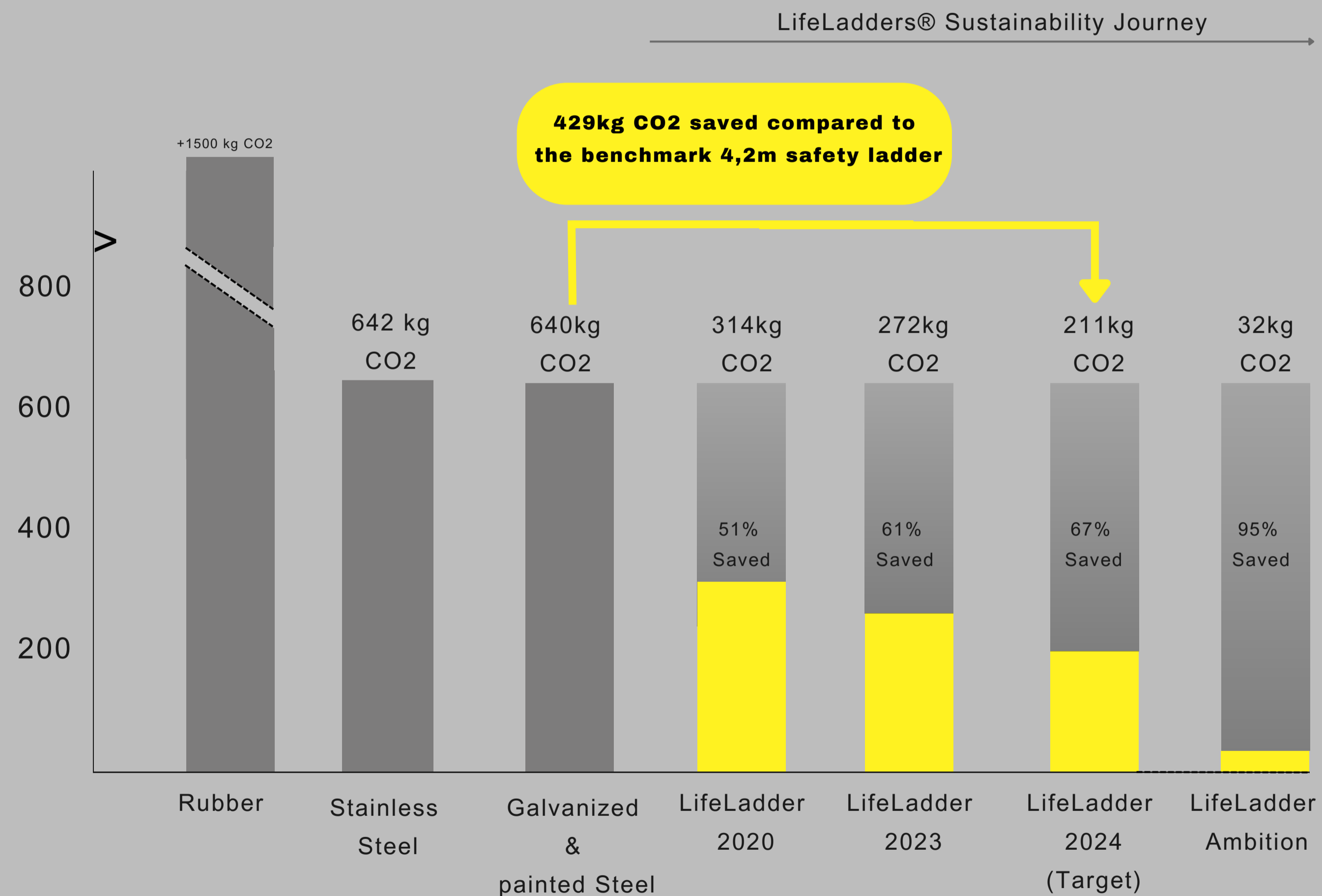
THE GLOBAL GOALS

*Port-Safety is part of ReFlow Maritime’s “Sailing Towards Zero” - an impartial case study on the Carbon Footprint of Maritime Components. Results show that LifeLadder® reduces impact on climate change by 67% compared to traditional safety ladders of stainless or galvanized painted steel (cradle-to-gate): www.re-flow.io/project-sailing-towards-zero

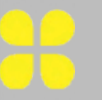


Mission

”Our journey to carbon-neutral”



*Port-Safety is part of ReFlow Maritime’s “Sailing Towards Zero” - an impartial case study on the Carbon Footprint of Maritime Components. Results show that LifeLadder® reduces impact on climate change by 67% compared to traditional safety ladders of stainless or galvanized painted steel (cradle-to-gate): www.re-flow.io/project-sailing-towards-zero



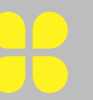
Installations

Since launch mid 2018



+1900 LifeLadders in 37 countries
City wharfs, marinas and industrial ports

Added Value



Improved safety and early break even

Improved Safety

Visible day and night
Solar lighting

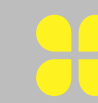
Maintenance-free

Robust materials
with superior
lifetime

Sustainable

Easy to repair
67% CO2 reduction



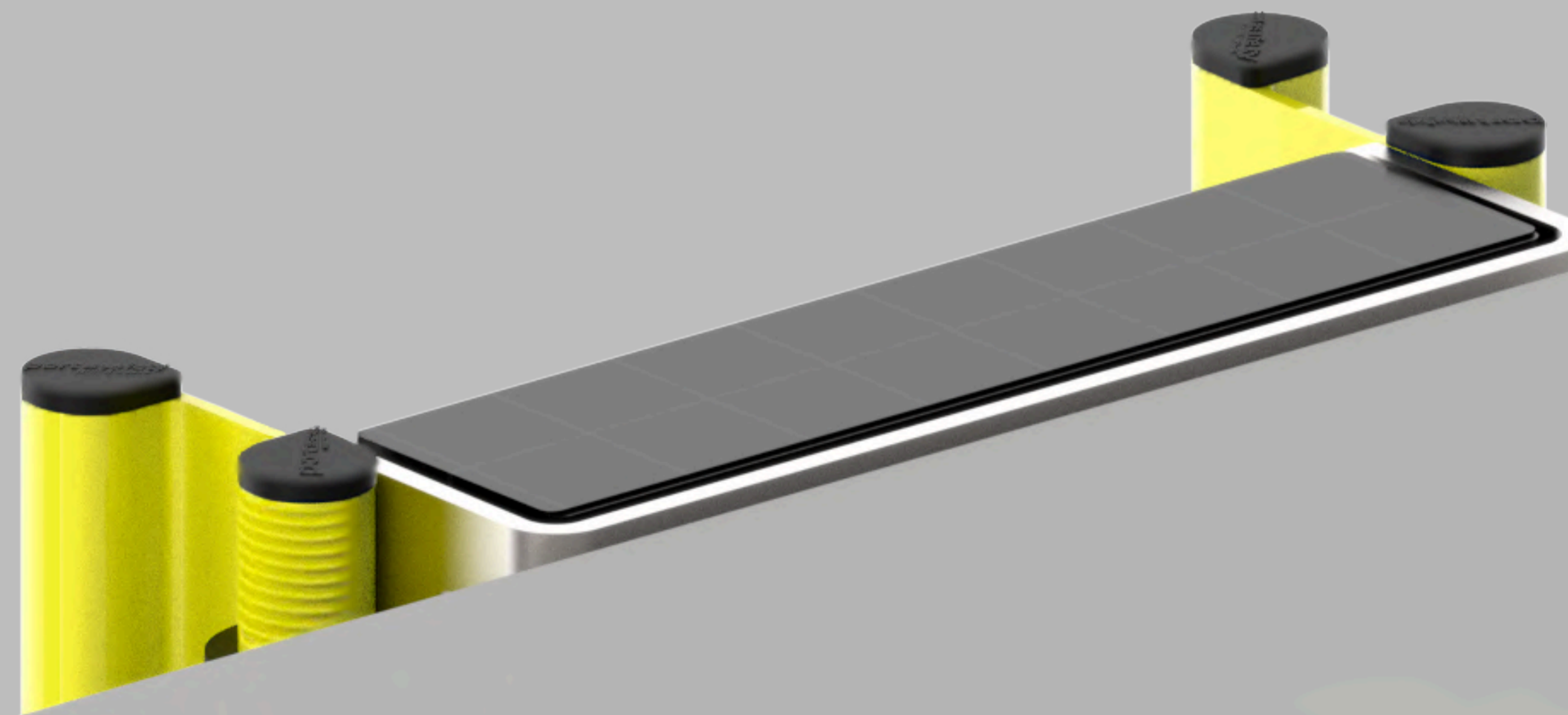


Economy



Long lifetime
Maintenance free
Easy module replacement
Lightweight installation
Compact storage
Reduced Costs

Loyalty Agreement available





LIFELADDER

port:safety

Safety upgrade

Reduced Costs

Sustainable





Svendborg, Denmark



Oslo, Norway



There are actually
4 ladders in this picture...

Aberdeen Harbour, Scotland



Lindø Port of Odense, Denmark



Tower Pier, London



port:safety
in the business of saving lives

Copenhagen · Denmark
info@port-safety.com
+45 53 68 80 70

www.port-safety.com